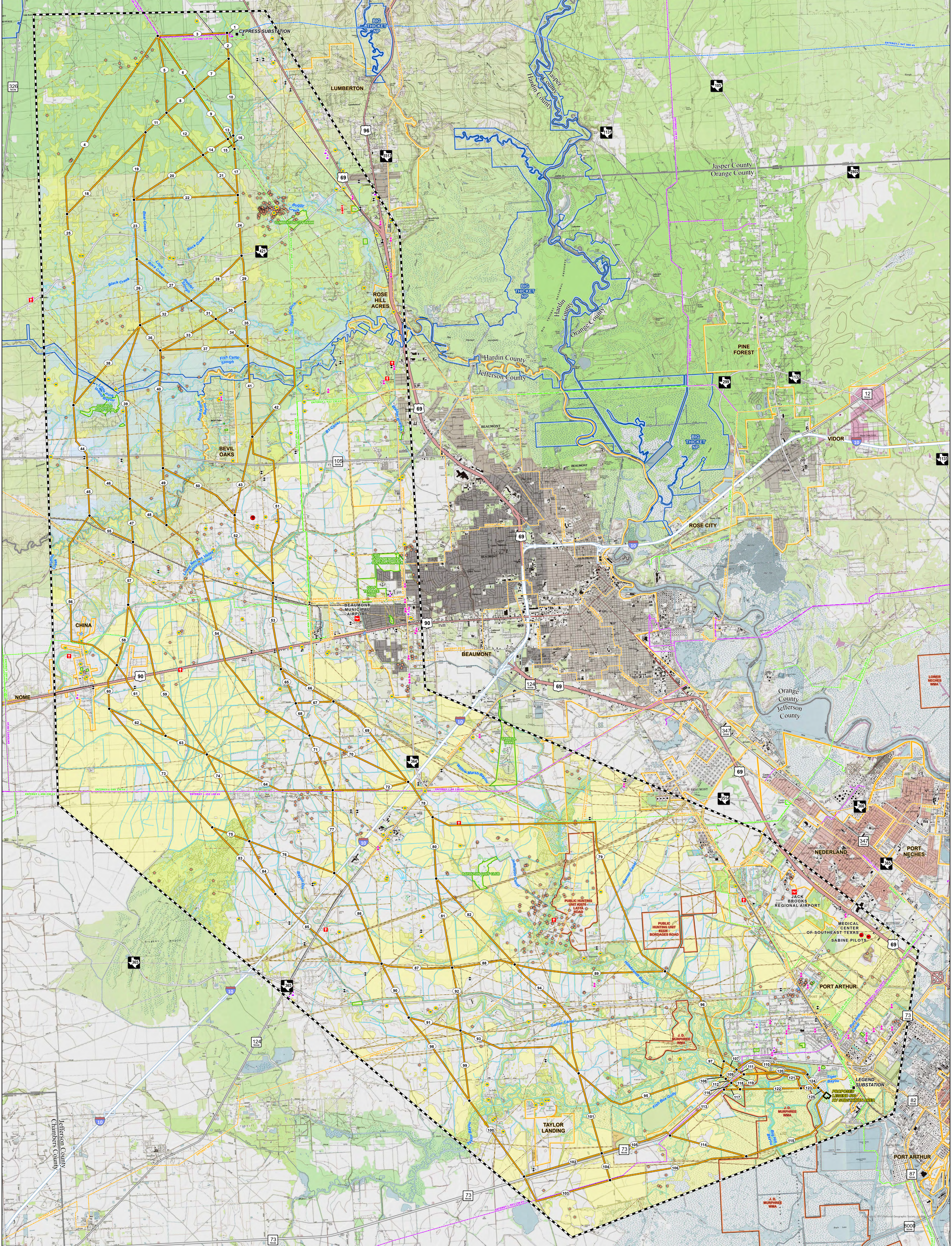


Project Features Study Area Boundary Preliminary Alternative Segment, Node, and Label Existing Substation Proposed Legend 500 KV Substation	Existing Utility Features 69 KV Transmission Line 138 KV Transmission Line 230 KV Transmission Line 345 KV Transmission Line 500 KV Transmission Line Oil / Gas Pipeline	Land Use Features AM Communication Tower Communication Tower Other School Church Oil / Gas Well Water Well	Land Use Features Park / Recreation Area TPWD Public Hunting and Wildlife Management Areas Big Thicket National Preserve Cemetery Official Texas Historical Marker	Transportation Features Public Airport Private Airstrip Helipoint Interstate Highway State Highway Farm to Market Road Railroad	Hydrologic Features River / Stream NWI Mapped Wetlands 100-Year Floodplain Waterbody Administrative Features Municipal Boundary County Boundary		<p>CYPRESS TO LEGEND 500 KV TRANSMISSION LINE PROJECT</p> <p>PRELIMINARY ALTERNATIVE SEGMENTS WITH ENVIRONMENTAL CONSTRAINTS</p> <p>TOPOGRAPHIC BASE MAP</p> <p>DATE: 4/23/2024</p> <p>POWER ENGINEERS</p> <p>entergy</p> <p>Scale: 1" = 1 Mile</p>
--	---	---	--	---	--	--	---

Preliminary and Subject to Change



Copyright © 2024 by National Geographic Society